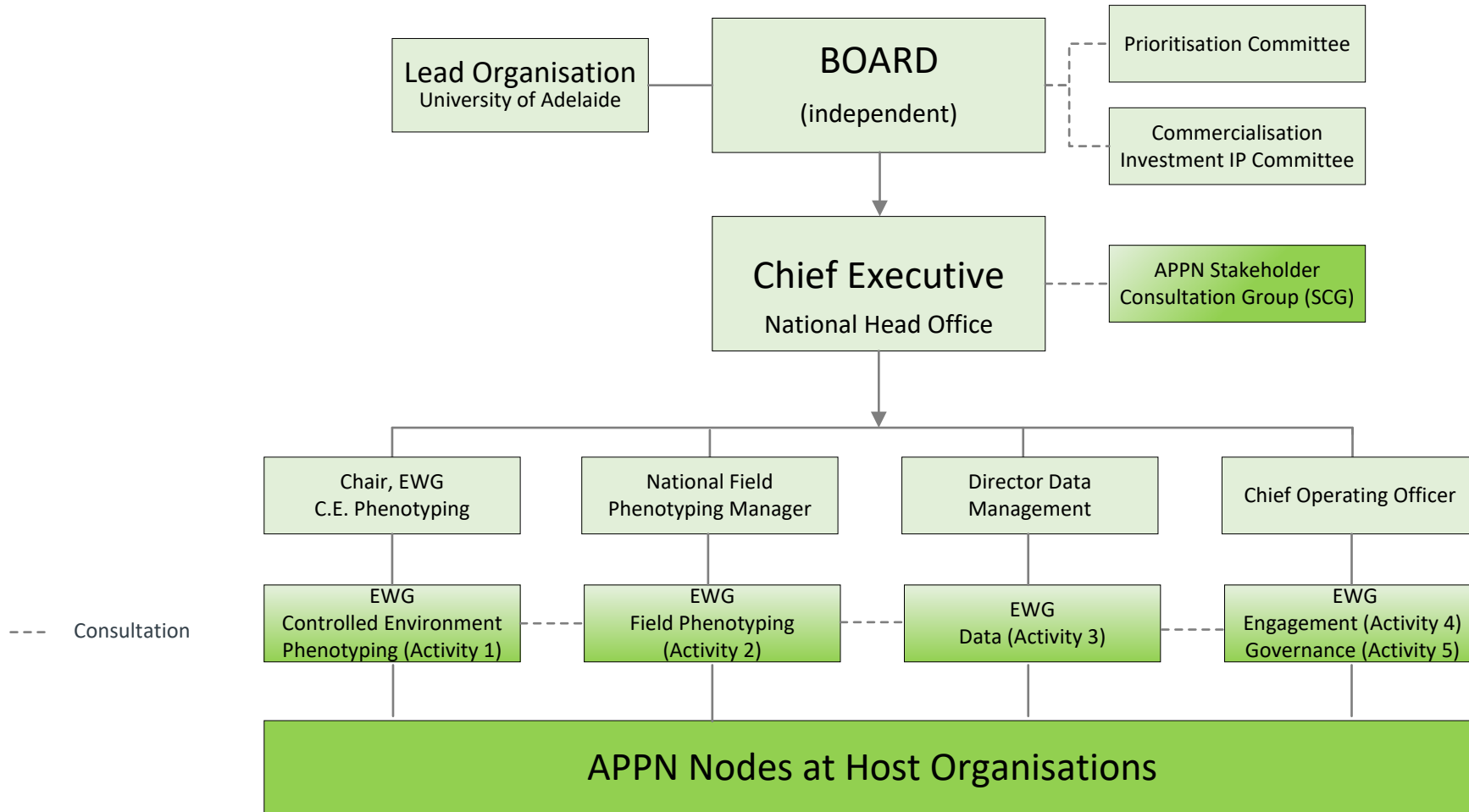


# Governance Chart – Australian Plant Phenomics Network (APPN)

The APPN is a network of National Research Infrastructure enabled by the Australian Government’s **National Collaborative Research Infrastructure Strategy (NCRIS)**. We report annually to the Department of Education on the activities and progress in plant phenotyping delivered with our partners to enable and accelerate research and innovation in agricultural production.



EWG = Expert Working Groups  
 APPN Host Organisation input via SCG (PVCR level or equivalent), EWGs (Node level), the APPN Annual Forum  
 Annual events: APPN Annual Forum (all stakeholders)  
 Semi-annual events: SCG meeting, EWG Chairs presentation to Board  
 Quarterly events: Board meetings (incl. National Head Office update); National EWG meetings (CEP, Field, Data, Eng. & Gov)

